

General Epi Pen/Twinject Auto Injector Medication Training Information

General Epi Pen/Twinject Training Information:

The training provided today:

- Will provide you with general information related to an allergic reaction.
- Will provide you with information about the medication used to treat an allergic reaction.
- Will familiarize you with the 2 different types of disposable auto injector medication delivery systems.

Your participation in this *general* Epi Pen/Twinject training session:

- DOES NOT qualify you to teach another person to administer the Epi Pen or Twinject auto injector medication.
- Only the School Nurse is a qualified trainer.
- In order to be considered trained to administer the emergency medication, child specific training based on the student's Severe Allergy Action and/or Individualized Health Care Plan is required before school staff can assist or administer the Epi Pen/Twinject.

Information about the Auto Injector Medication Delivery System

What is the Epi Pen:

The Epi Pen is an easy to use disposable, self administered, auto injected medication delivery system that delivers a single pre loaded dose of an emergency medication called epinephrine (Adrenaline).

What is the Twinject:

The Twinject is an easy to use 2 dose disposable, self administered, auto injected medication delivery system that delivers a single pre loaded dose of an emergency medication called epinephrine (Adrenaline). The Twinject unlike the Epi Pen contains a 2nd dose of epinephrine that is NOT auto injected that can be administered manually if symptoms re-appear before emergency help arrives.

Epi Pen/Twinject Medication action:

Epinephrine acts directly on the cardiovascular and respiratory systems to counter the potentially fatal effects of a severe allergic reaction or anaphylaxis.

The medication works rapidly to constrict the blood vessels, relax muscles in the lungs which improves breathing, reverses swelling and stimulates the heartbeat.

- In most cases students know how to use the Epi Pen/Twinject but in some situations staff assistance may be necessary.
- The Epi Pen/Twinject is a temporary measure only.
- When an Epi Pen/Twinject is used 911 MUST be called to have the individual transported to the emergency room for continued evaluation and observation.

Using the Epi Pen/Twinject provides a 15 to 20 minute interval to:

- Initially lessen the severity of an allergic reaction.
- Allow for symptoms to subside.
- Reverse the reaction.

Some common causes of a severe allergic reaction or anaphylaxis:

- **Insect stings-**
Wasps, hornets, bees, yellow jackets and fire ants
- **Food-**
Peanuts, tree nuts other nuts, eggs, shellfish, fish, milk, soy, wheat and sometimes food additives
- **Medications-**
Certain antibiotics, seizure medication, muscle relaxers, sometimes aspirin and non-steroidal anti-inflammatory agents
- **Exercise**
- **Latex**

General signs of a severe allergic reaction:

- Itching of the skin and raised rash (hives)
- Flushing, swelling of the tissues of the lips, throat and tongue, hands and feet
- Wheezing, shortness of breath, coughing, hoarseness, headache
- Nausea, vomiting, abdominal cramps
- Sense of impending doom, loss of consciousness

Do the following when a parent brings an Epi Pen/Twinject to school or mentions that a student has an Epi Pen/Twinject with them:

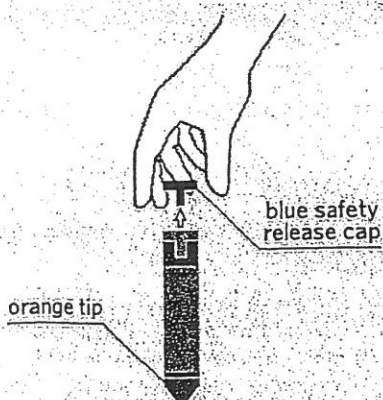
- Inform the parent that they need to consult with the school nurse
- Contact the school nurse or the school health office as soon as possible
- Inform the parent of the necessary requirements related to the Epi Pen/Twinject

Requirements needed before accepting an Epi Pen/Twinject at school:

- The School Nurse will obtain a physician order prescribing the use of the Epi Pen/Twinject
- A parent medication authorization form
- Specific indications for the use of the Epi Pen/Twinject
- Student specific training as it relates to the Severe Allergy Action and/or Individualized Health Care Plan before school staff can assist a student or administer the Epi Pen

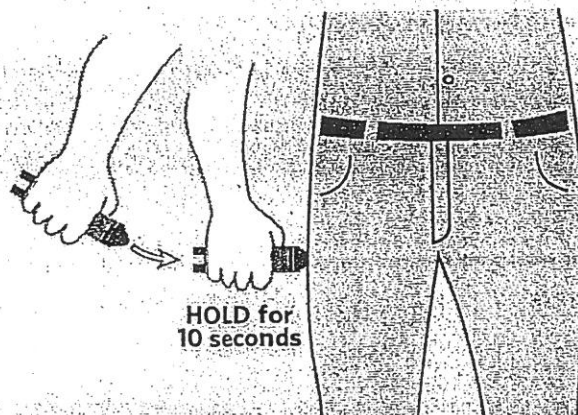
Where is the Epi Pen/Twinject located in the school?

- The school nurse will determine where a student's Epi Pen/Twinject is to be located
- The determination will be made on a case-by-case basis after assessing the student's health condition, consulting with the parent, based on individual student need, the student's knowledge of his/her health condition and the student's ability to safely and appropriately administer the Epi Pen/Twinject.



1

Pull off the blue safety release cap.



2

Swing and firmly push the orange tip against the outer thigh so it 'clicks.' HOLD on thigh for approximately 10 seconds to deliver the drug.

Please note: As soon as you release pressure from the thigh, the protective cover will extend.

Each EpiPen Auto-Injector contains a single dose of a medicine called epinephrine, which you inject into your outer thigh. **DO NOT INJECT INTRAVENOUSLY. DO NOT INJECT INTO YOUR BUTTOCK,** as this may not be effective for a severe allergic reaction. In case of accidental injection, please seek immediate medical treatment.

Call 911

3

Seek immediate emergency medical attention and be sure to take the EpiPen Auto-Injector with you to the emergency room.

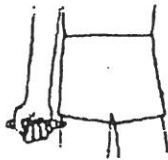
To view an instructional video demonstrating how to use an EpiPen Auto-Injector, please visit epipen.com.

EpiPen® and EpiPen® Jr. Directions

- Pull off gray activation cap.

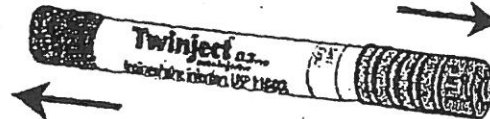


- Hold black tip near outer thigh (always apply to thigh).



- Swing and jab firmly into outer thigh until Auto-Injector mechanism functions. Hold in place and count to 10. Remove the EpiPen® unit and massage the injection area for 10 seconds.

Twinject® 0.3 mg and Twinject® 0.15 mg Directions



- Remove caps labeled "1" and "2."
- Place rounded tip against outer thigh, press down hard until needle penetrates. Hold for 10 seconds, then remove.



SECOND DOSE ADMINISTRATION:

If symptoms don't improve after 10 minutes, administer second dose:

- Unscrew rounded tip. Pull syringe from barrel by holding blue collar at needle base.
- Slide yellow collar off plunger.
- Put needle into thigh through skin, push plunger down all the way, and remove.



Once EpiPen® or Twinject® is used, call the Rescue Squad. Take the used unit with you to the Emergency Room. Plan to stay for observation at the Emergency Room for at least 4 hours.

For children with multiple food allergies, consider providing separate Action Plans for different foods.

***Medication checklist adapted from the Authorization of Emergency Treatment form developed by the Mount Sinai School of Medicine. Used with permission.*



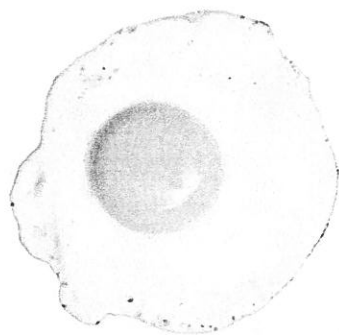
June/2007

AUVI-QTM

epinephrine injection, USP

new for severe allergic reactions

MEET Auvi-Q,
A BREAKTHROUGH
IN EPINEPHRINE
AUTO-INJECTOR DESIGN



Voice Instructions

Talks you through the injection process

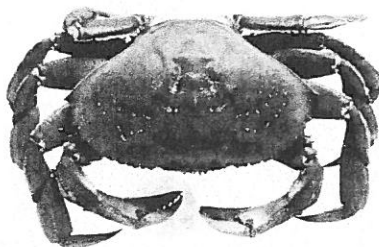
Compact Size

Fits in a pocket or small purse

For Adults and Children

2 dosage strengths available,
based on body weight

WATCH THE DEMO



Indication

Auvi-QTM (epinephrine injection, USP) is used to treat life-threatening allergic reactions (anaphylaxis) in people who are at risk for or have a history of these reactions.

Important Safety Information

Auvi-Q is for immediate self (or caregiver) administration and does not take the place of emergency medical care. Seek immediate medical treatment after use.

Please see additional Important Safety Information on reverse and full Prescribing Information enclosed.

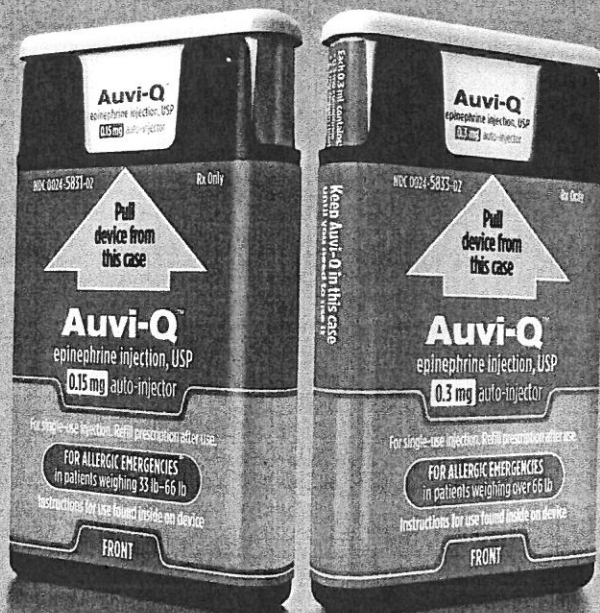
auvi-q.com



I talk.



I'm Auvi-Q, the first and only epinephrine auto-injector with voice instructions for adults and children at risk for life-threatening allergic reactions.



- **Easy to use**
step-by-step voice instructions guide you or others through the injection process
- **Compact size**
fits into a pocket or small purse
- **Flashing light**
tells you or others when injection is complete
- **"Press-and-hold"**
injection method with 5-second hold time

0.15 mg for patients 33-66 lb | 0.3 mg for patients over 66 lb

Indication

Auvi-Q™ (epinephrine injection, USP) is used to treat life-threatening allergic reactions (anaphylaxis) in people who are at risk for or have a history of these reactions.

Important Safety Information

Auvi-Q is for immediate self (or caregiver) administration and does not take the place of emergency medical care. Seek immediate medical treatment after use. Each Auvi-Q contains a single dose of epinephrine. **Auvi-Q should only be injected into your outer thigh.** DO NOT INJECT INTO BUTTOCK OR INTRAVENOUSLY. If you accidentally inject Auvi-Q into any other part of your body, seek immediate medical treatment. Epinephrine should be used with caution if you have heart disease or are taking certain medicines that can cause heart-related (cardiac) symptoms.

If you take certain medicines, you may develop serious life-threatening side effects from epinephrine. Be sure to tell your doctor all the medicines you take, especially medicines for asthma. Side effects may be increased in patients with certain medical conditions, or who take certain medicines. These include asthma, allergies, depression, thyroid disease, Parkinson's disease, diabetes, high blood pressure, and heart disease.

The most common side effects may include increase in heart rate, stronger or irregular heartbeat, sweating, nausea and vomiting, difficulty breathing, paleness, dizziness, weakness or shakiness, headache, apprehension, nervousness, or anxiety. These side effects go away quickly, especially if you rest.

Talk to your healthcare professional to see if Auvi-Q is right for you.

You are encouraged to report negative side effects of prescription drugs to the FDA. Visit www.fda.gov/medwatch or call 1-800-FDA-1088.

Please see full Prescribing Information enclosed.

Auvi-Q™
epinephrine injection, USP
0.15 mg/0.3 mg auto-injectors
TALKS YOU THROUGH

Ask your doctor about Auvi-Q. Learn more at auvi-q.com